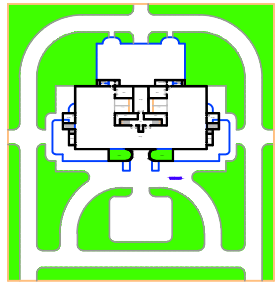
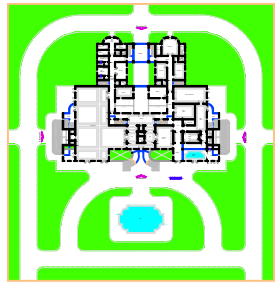


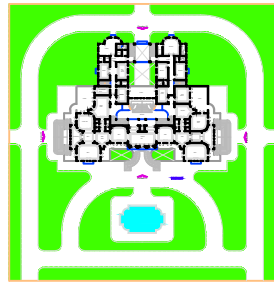
Roof Plan



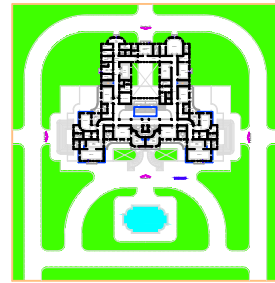
Lower Floor Plan



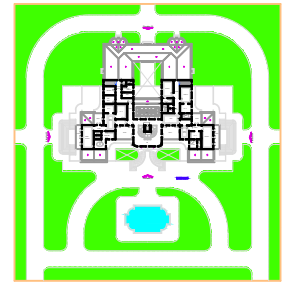
First Floor Plan



Second Floor Plan



Third Floor Plan



Fourth Floor Plan

Total Area = 5782.12 sqm

Covered Area = 21

Basement
 First Floor - 01
 Second Floor - 02
 Third Floor - 03
 Fourth Floor - 04
 Total - 04

Basement
 First Floor - 01
 Second Floor - 02
 Third Floor - 03
 Fourth Floor - 04
 Total - 04

Basement
 First Floor - 01 (including 2
 levels)
 Second Floor - 02 (including 2
 levels)
 Third Floor - 03
 Fourth Floor - 04
 Total - 12 (including 8 levels)

